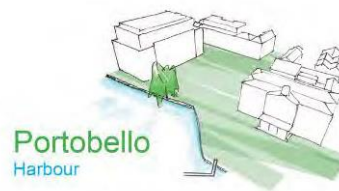




Comhairle Cathrach
Bhaile Átha Cliath
Dublin City Council

ait
urbanism + landscape

Portobello Harbour



Greening
The City
Parks & Landscape Services



This presentation will:

- Provide an update on the Public Consultation
- Show a sketch of the emerging layout
- Next Steps and Programme

There was two sets of public consultations over the summer months along with two sets of online consultations.

The first set in June had over 100 people attend in person workshops at St Kevins Community Centre. This was a workshop which sought to get likes and dislikes about the current plaza along with designs and aspirations of the plaza

The second consultation took place on the 21st of July again in St Kevins Community Centre with approximately 110 people in attendance. This workshop presented two options which were developed from the feedback and sketches of the first workshop and online submissions.

The process demonstrated that the existing site is very restrained.

There is a desire by skateboarding community to still have a location while the majority of local residents do not wish to have skateboarding near their homes.

Initial consultation with Transport Department lead to week long trial of no traffic on Richmond Row, no adverse effects were recorded.

Key Findings of the Consultation Process

- Extend project
- Sketch Plan 2
- Accommodate Skateboarding
- Softer and more biodiverse space
- Address pedestrian and cycle conflicts
- Flexible hard landscape area for events
- Hotel - not to be dominant



Sketch Plan 2



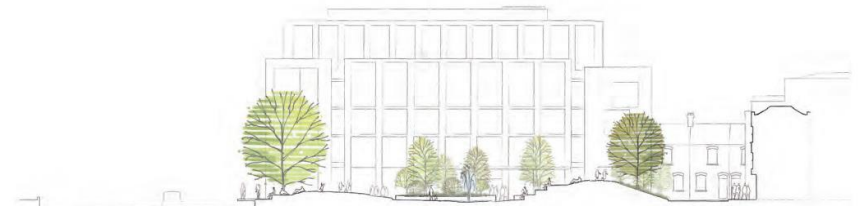
Sketch Plan 2



1. Climbing Elements
2. Elevated lawn (views to canal and central open space)
3. Terraced Seating
4. Water Feature
5. Bench seating on raised planters
6. Central Open Space (events etc.)
7. Biodiversity Planting (micro-woodland)
8. Lawn Area
9. Tables & Chairs
10. Feature bench/recliner
11. Boardwalk



Concept Perspective



Section

Taking Sketch Plan #2 along with all the other findings for the public consultation a new sketch plan was developed which included the area of Richmond Row at Portobello House. This is only a sketch plan but shows how the area could begin to look by extending into that space.

This sketch plan provides more space to accommodate more activities and reduces the conflict points between residents and skateboarding.

Sketch Plan 28.11.22



Preliminary sketch plan - 28.11.2022



Diagrams



Extend



2 way cycling



Sitting edges and seating

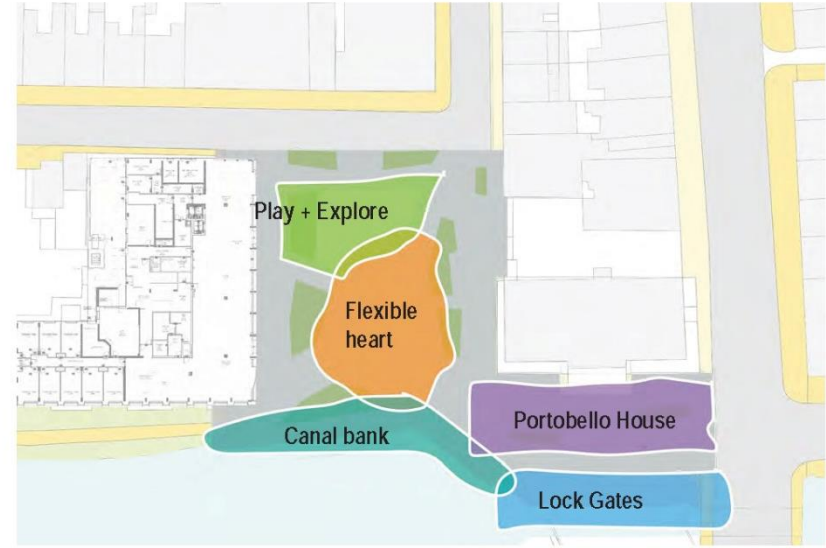


Greening and sustainable drainage

Diagrams



Tree Canopy



Activity

Following Comments and Observations from this meeting. The Sketch plan will be circulated internally for Pre Part 8 review and comment.

A non statutory public consultation of this plan is proposed for early 2023.

Subject to feedback and approvals the intention is to begin the formal Part 8 planning application process in Q1 of 2023. The timeline for this process is 18 months, but can take longer depending on issues.

Comments or Questions



Preliminary sketch plan - 28.11.2022

